

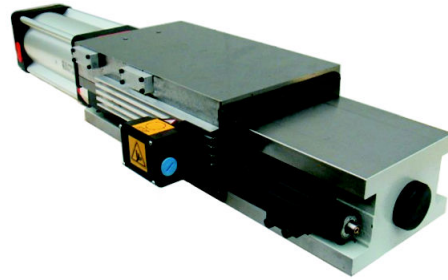
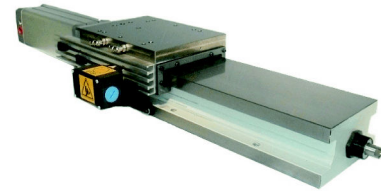
**SLITTE DI AVANZAMENTO CON GUIDE RADENTI - SLIDE UNITS, BOX WAYS CONSTRUCTION**  
**UNITES D'AVANCE AVEC GUIDAGE LISSE - VORSHUBSCHLITTEN -**  
**MESAS DESPLAZABLES CON GUIAS TRATADA POR INDUCCION**

**PNEUMATIC**

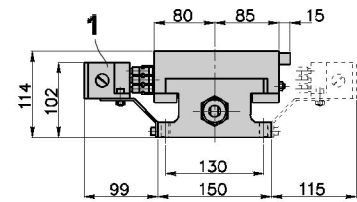
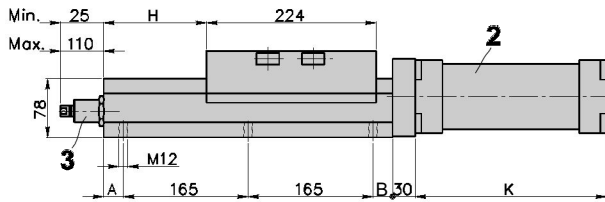
ORDERING REFERENCES

**P25/D**

GRANDEZZA SIZE TAILLE BAUGRÖÖE TAMANO	CORSA STROKE COURSE VORSCHUB CARRERA	SPINTA STRENGTH POUSSEE SCHUBKRAFT EMPUJE	PESO WEIGHT POIDS GEWICHT PESO	A	B	K	H
	mm	6 bar	kg ~	mm	mm	mm	mm
<b>P25/D</b>	120	3000N	29	26	262	57	136
<b>P25/E</b>	200		31	106	16	332	206
<b>P25/L</b>	240		33	106	106	372	250
<b>P40/E</b>	200	7000N	77	-	-	-	-



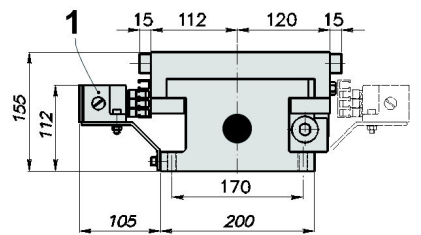
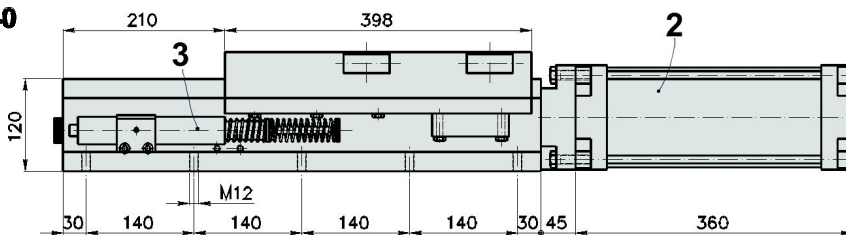
**P25**



69

B

**P40**



	I		GB		F		D		E	
<b>1</b>	Fine corsa elettrico a 3 contatti. Montato sul lato SX o DX.		3 position cam switch. Mounting on L.H. or R.H. side.		Boitier multicontact 3 pistes pouvant être monté à droit ou à gauche.		Elektrischer Endschalter 3 Spuren rechts oder links montierbar.		Interruptores eléctricos 3 contactos. Montados sobre el lado izquierdo o derecho.	
<b>2</b>	Cilindro pneum. ISO	P25 P40	Pneum. cylinder ISO	P25 P40	Vérin pneum. ISO	P25 P40	Pneum. Zylinder ISO	P25 P40	Cilindro neum. ISO	P25 P40
	Raccordi	ø80 3/8 ø125 1/2	air ports	ø80 3/8 ø125 1/2	raccordements	ø80 3/8 ø125 1/2	Luftanschluss	ø80 3/8 ø125 1/2	conexiones	ø80 3/8 ø125 1/2
	Cilindri a richiesta	ø100 - ø125 -	Cylinder on request	ø100 - ø125 -	Verins sur demand	ø100 - ø125 -	Zylinder auf Anfrage	ø100 - ø125 -	Cilindro a solicitud	ø100 - ø125 -
<b>3</b>	Regolatore avanzamento	F80 F100.2	Feed Hydrocheck	F80 F100.2	Régulateur hydraulique	F80 F100.2	Hydraulische Bremse	F80 F100.2	Regulador de avance	F80 F100.2
	Corsa	80 100	Stroke	80 100	Course	80 100	Vorschub	80 100	Carrera	80 100
	Corse rapido-lento regolabili		Fast-slow stroke adjustable		Courses rapide et travail réglables		Eil- und Arbeitsgang		Rapido -lento ajustable	
	Colore Grigio RAL 7038		Color grey RAL 7038		Couleur gris RAL 7038		Farbe hellgrau RAL 703 8		Color gris RAL 7038	

69